

**North Georgia Live Steamers
Board of Directors Meeting Minutes
August 6, 2016**

I. Call to order

Bill Leahy called the meeting to order at 11:07am at the Whistle Post cafe.

No minutes from the previous meeting were available.

II. Old/New Business

Bill distributed several hand-outs. See attachments.

Major Discussion Points:

- Containers – possible grants
- Club Steamer – getting it running
- Construction Project – new permanent crossing
- See attached for others.

Meeting was adjourned at 12:35pm

Respectfully submitted,
Dave Levy, Secretary

North Georgia Live Steamers
Board Meeting
August 6, 2016



Agenda

1. Additional Containers - *donations possible - rent to members*

2. Club Steamer

3. Construction Projects

- Installation of a concrete crossing to give Bobcat access to the interior of the West Loop
- Installation of a new bridge (Not the Doe Bridge)
- Completion of New Passenger Main
- Installation of Water Line to provide water for steamers at passenger station and to provide water for garden
- Extension of ash pit track
- Constructing a roof over the steaming bays
- Fire Pit

4. Club Fun Activities

- Ops Session
- Club Run Days
- Night Sessions
- Holiday Runs

5. Community Activities

- Boy Scout Merit Badge Program
- Girl Scout Merit Badge Program
- Other ideas?

6. Public Run Days - How many?

7. Train Shows - How many?

8. Other items?

Remaining Saturdays in 2016

8/6 - Today

8/13

8/20 – Run Day Prep Work Day

8/27 – Public Run Day

9/3 – Crossing Installation

9/10 – Crossing Installation

9/17 - Ops Prep Work Day

9/24 – Ops Session

10/1 – General Meeting

10/8 – Run day Prep Work Day

10/15 – Public Run Day

10/22 – Construction?

10/29 – Construction?

11/5 – Club Run?

11/12

11/19

11/26 – Thanksgiving Run?

12/3 – Christmas Party?

12/10

12/17

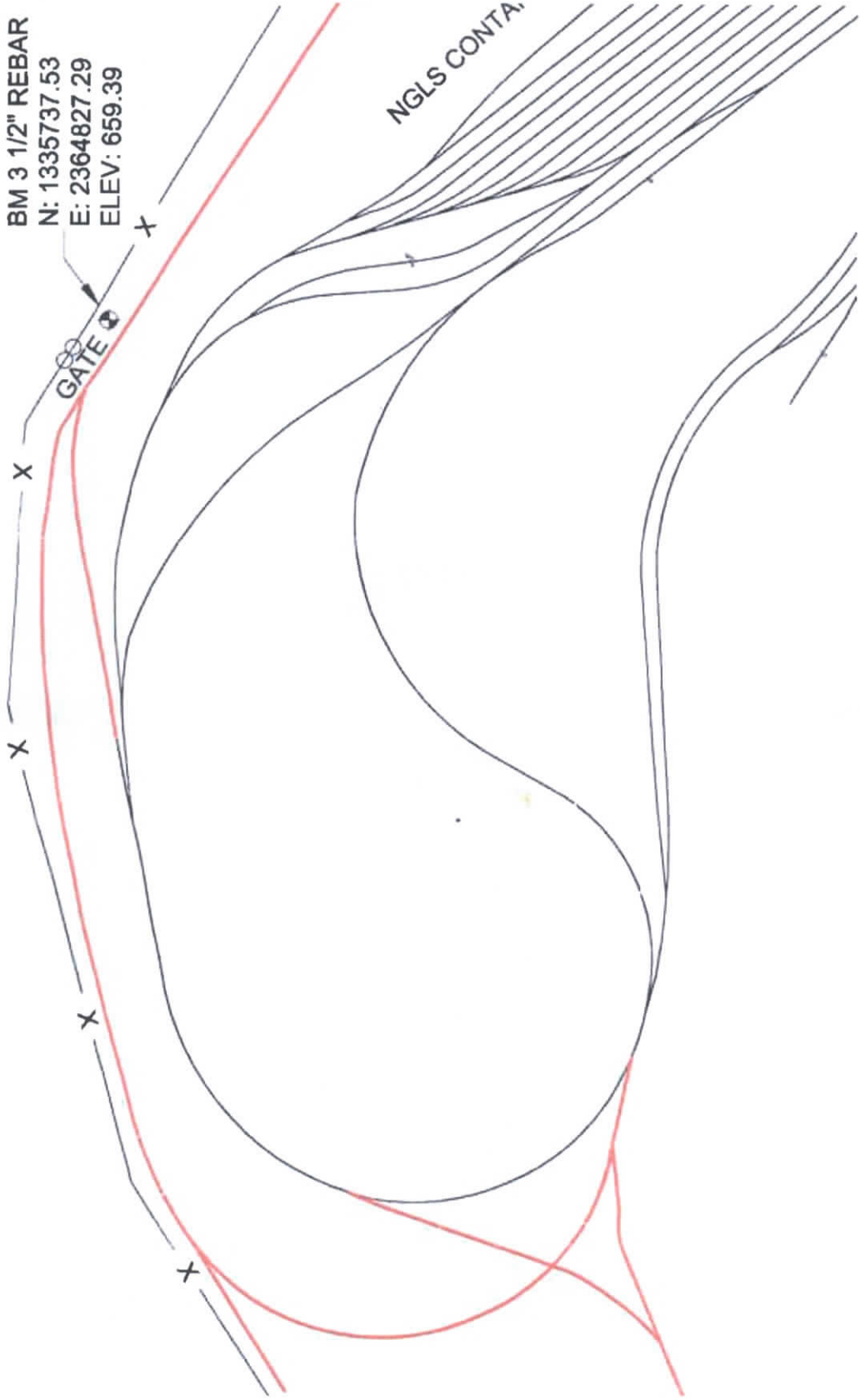
12/24

12/31

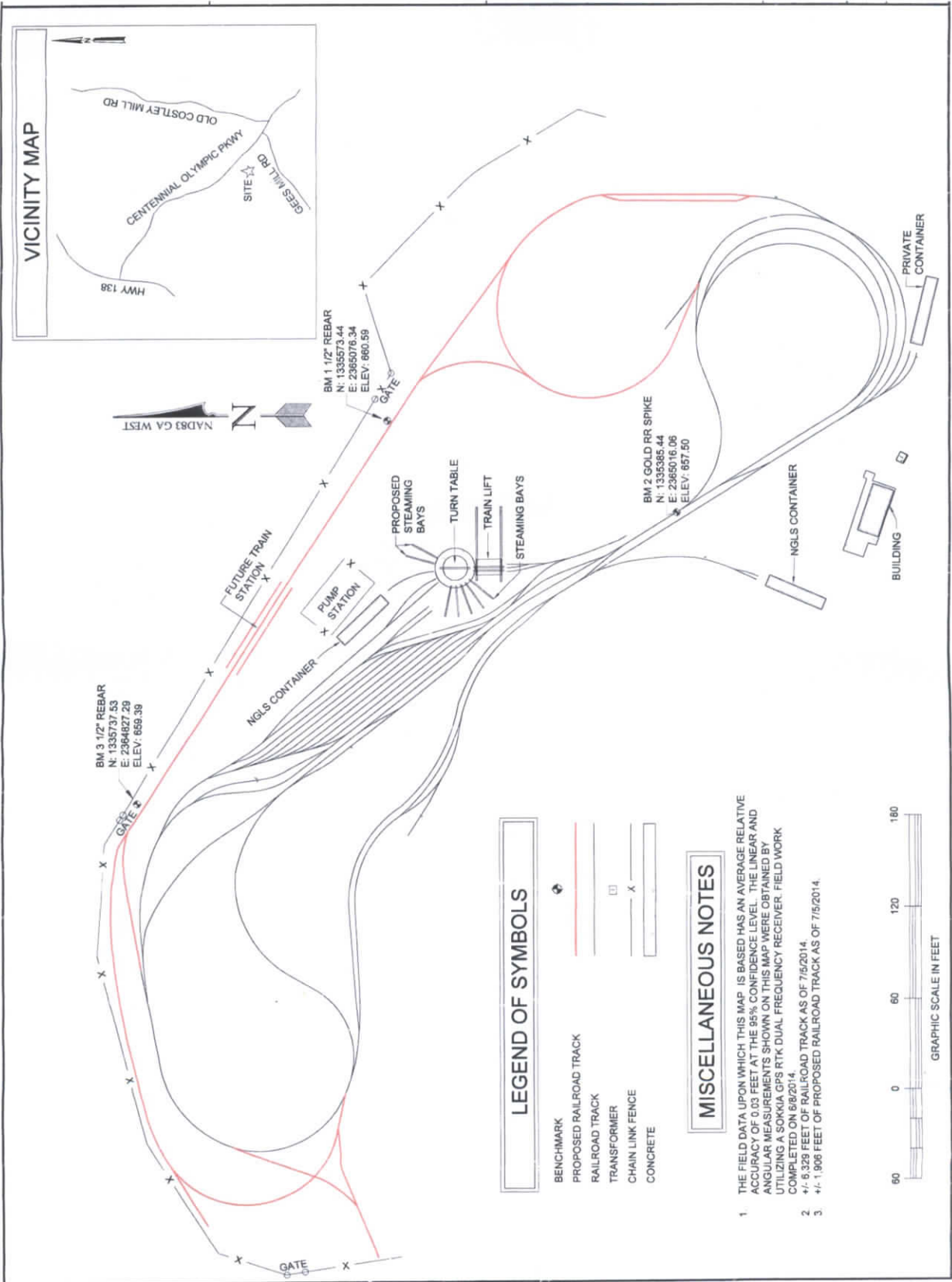


BM 3 1/2" REBAR
N: 1335737.53
E: 2364827.29
ELEV: 659.39

NGLS CONTA.



VICINITY MAP

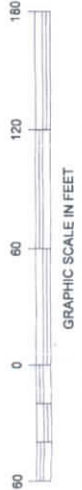


LEGEND OF SYMBOLS

- BENCHMARK
- PROPOSED RAILROAD TRACK
- RAILROAD TRACK
- TRANSFORMER
- CHAIN LINK FENCE
- CONCRETE

MISCELLANEOUS NOTES

1. THE FIELD DATA UPON WHICH THIS MAP IS BASED HAS AN AVERAGE RELATIVE ACCURACY OF 0.03 FEET AT THE 95% CONFIDENCE LEVEL. THE LINEAR AND ANGULAR MEASUREMENTS SHOWN ON THIS MAP WERE OBTAINED BY UTILIZING A SOKKIA GPS RTK DUAL FREQUENCY RECEIVER. FIELD WORK COMPLETED ON 5/8/2014.
2. +/- 6.329 FEET OF RAILROAD TRACK AS OF 7/5/2014
3. +/- 1.908 FEET OF PROPOSED RAILROAD TRACK AS OF 7/5/2014.



Railroading merit badge requirements

1. Do THREE of the following:

- a. Name three types of modern freight trains. Explain why unit trains are more efficient than mixed freight trains.
- b. Name one Class I or regional railroad. Explain what major cities it serves, the locations of major terminals, service facilities, and crew change points, and the major commodities it carries.
- c. Using models or pictures, identify 10 types of railroad freight or passenger cars. Explain the purpose of each type of car.
- d. Explain how a modern diesel or electric locomotive develops power. Explain the terms dynamic braking and radial steering trucks.

2. Do the following:

- a. Explain the purpose and formation of Amtrak. Explain, by the use of a timetable, a plan for making a trip by rail between two cities at least 500 miles apart. List the times of departure and arrival at your destination, the train number, and the type of service you want.
- b. List and explain the various forms of public/mass transit using rail.

3. Do ONE of the following:

- a. Name four departments of a railroad company. Describe what each department does.
- b. Tell about the opportunities in railroading that interest you most and why.
- c. Name four rail support industries, Describe the function of each one.
- d. With your parent's and counselor's approval, interview someone employed in the rail industry. Learn what that person does and how this person became interested in railroading. Find out what type of schooling and training are required for this position.

4. Explain the purpose of Operation Lifesaver and its mission.

5. Do THREE of the following:

- a. List five safety precautions that help make trains safer for workers and passengers.
- b. Explain to your merit badge counselor why safety around rights-of-way are important.
- c. List 10 safety tips to remember when you are near a railroad track (either on the ground or on a station platform) or aboard a train.
- d. Tell your counselor about the guidelines for conduct that should be followed when you are near or on railroad property. Explain the dangers of trespassing on railroad property.
- e. Tell what an automobile driver can do to safely operate a car at grade crossings, and list three things an automobile driver should never do at a grade crossing.
- f. Tell how to report a malfunction of grade crossing warning devices.
- g. List safety precautions a pedestrian should follow at a public crossing.

6. Explain the appearance and meaning of the following warning signs and devices: advance warning sign, pavement markings, crossbucks, flashing red lights, crossing gates.

7. Do EACH of the following:

- a. Explain how railroad signals operate and show two basic signal types using color and configuration.
- b. Explain the meaning of three horn signals.
- c. Describe a way to signal a train for an emergency stop.
- d. Explain the use and function of the EOTD (end-of-train device) or FRED (Flashing rear end device) used on the last car of most freight trains.

8. Select ONE of the following special-interest areas and complete the requirements:

a. Model Railroading

With your parent's and counselor's approval, do TWO of the following:

- 1. Draw a layout of your own model railroad; or one that could be built in your home. Design a point-to-point track or loop with different routings. Include one of the following: turnaround or terminal or yard or siding.
- 2. Build one model railroad car kit or one locomotive kit.

3. Name the scale of four popular model railroad gauges. Identify the scale of four model cars or locomotives.
4. Locate the Web site of four model railroad - related manufacturers or magazine publishers. Print information on their products and services and discuss the information with your counselor.
5. Build one railroad structure (from scratch or using a kit), paint and weather the structure, mount it on your layout or diorama, and make the surrounding area on a diorama scenic.
6. Alone or with others, build a model railroad or modular layout, including ballast and scenery. Make electrical connections and operate a train. Describe what you enjoyed most.
7. Participate in a switching contest on a timesaver layout and record your time.

b. Railfanning

With your parent's and counselor's approval, do TWO of the following:

1. Visit a railroad museum, historical display, or a prototype railroad-sponsored public event. With permission, photograph, videotape, or sketch items of interest. Explain what you saw and describe your photos, sketches, or videotape.
2. Purchase tickets and ride a scenic or historic railroad. Under supervision, photograph the equipment and discuss with your counselor the historic significance of the operation.
3. Locate the Web site of four rail historical groups, then find information on the history of the rail preservation operations and purpose of each group. Talk with a member of one of the groups and find out how you might help.
4. Plan a trip by rail between two points. Obtain a schedule and explain when the train should arrive at two intermediate points. Purchase the tickets and make the trip. Explain to your counselor what you saw.